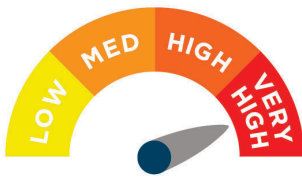


with remote

ALT-9300

Alerta Bariatric 2 Replacement System



ALT-9300 – Alerta Bariatric 2 – a replacement alternating pressure relieving mattress system with cell-on-cell air cells, a static base section and an in-use height of 10” for effective prevention and treatment of bariatric users up to very high risk of developing a pressure ulcer in hospital, nursing and care home environments.

With simple to use settings and functionality, the **Alerta Bariatric 2** enables the care provider to quickly set up the mattress system and have it operating at optimal pressure for a specific user with ease.

The wide range of features make the **Alerta Bariatric 2** a highly versatile and cost effective solution which has been manufactured to comply with the most stringent quality and in-use guidelines.

Alerta Bariatric 2 incorporates cutting-edge **SensaCare TruFlo Technology®** - constant auto pressure sensing through an air sensor and microcomputer regulator to provide ultra-low interface pressure and promote an even ambience for natural sleep patterns and stable blood circulation with Ultra-Silent™ pump operation.

Key Features

- > 350kg weight capacity
- > Pillow function
- > CPR release
- > Anchoring straps for securing to bed
- > Robust pump connection
- > Transport mode
- > Individually removable heel cells to create zero pressure under the heel
- > Seat inflation feature for additional support when sitting upright
- > Digital user weight input

Mattress Specification

- > Mattress Dimensions: 200 x 120 x 25 cm (78.5 x 47 x 10”)
- > Mattress Weight: 12.5kg (27.6lb)
- > Cell Structure: Cell-on-cell
- > CPR: Quick release toggle
- > Max Load: 350kg (772lb)
- > Heel function (3 x heel cells with one way valves)

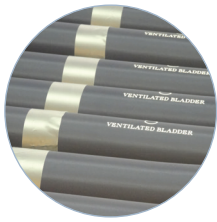
Cover Specification

- > Multi-stretch PU
- > Vapour permeable
- > Water resistant
- > Machine washable
- > Antimicrobial
- > 360 degree zipper
- > White underside of cover
- > BS7177: Crib 5

Pump Specification

- > Operating System: SensaCare TruFlo Technology®
- > Pump Dimensions: 34.5 x 24 x 12.5 cm (13.5 x 9.4 x 4.9”)
- > Pump Weight: 2.8kg (6.1lb)
- > Cycle Time: 10, 15, 20, 25 minutes
- > Memory function
- > Air Output: 12-13 litres/minute
- > Power Input: AC220-240V, 50-60Hz
- > Power Consumption: 9W
- > Fitted with hanging brackets
- > Alternating and static modes
- > Visual and audible alarm for low pressure, power failure and alternate failure
- > Control panel lock feature to avoid accidental change of settings
- > Max firm mode

KEY FEATURES AND BENEFITS



Nylon TPU coated cells



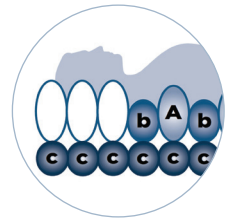
Independently removable cells



Covert sealed air cells



Removable heel cells



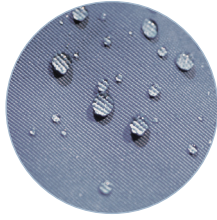
Pillow function



CPR release



Anchoring straps



Multi-stretch, waterproof & vapour permeable PU cover



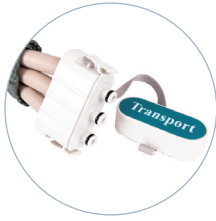
Antimicrobial, machine washable



360 Degree zipper



Robust pump connection



Transport mode



350KG Capacity



Remote control

CONTROL PANEL

Digital LED display for easy use

Visual and audible warning of air loss, power failure and alternate failure

Remote control communication



Static/alternating modes

Seat inflation for additional surface support to facilitate the sitting position

Control panel lock to prevent unauthorised or accidental tampering (hold for 2 sec)

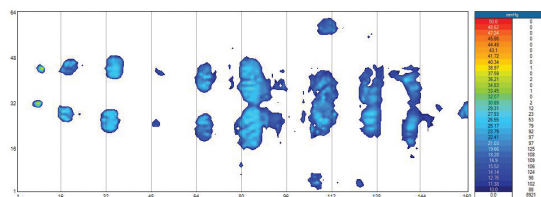
Power on

Digital user weight input

Multiple cycle time control for efficiency



Ultra-Silent™ pump operation to avoid disturbance



Clinical pressure mapping evaluation