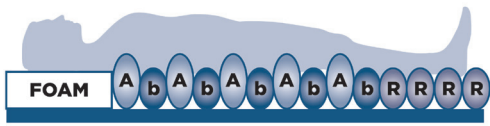


alerta[®] sensafo-hybrid



The **Alerta Sensafo Hybrid** is the world's first 4 in 1 hybrid mattress with foam-filled air cells, SensaGel adaptive foot cells and 150mm (6") deep air cells for effective prevention and treatment of users up to very high risk of developing a pressure ulcer.

When used without a pump the **Alerta Sensafo Hybrid** performs as a high specification foam mattress and when used with a pump it performs the same as an alternating air system. There is no requirement to remove the user from bed to change from a foam system to an alternating air system.

The **Alerta Sensafo Hybrid** has a built-in fire evacuation system with straps and handles, allowing the mattress to be quickly moved with the user in position during emergency situations.

There are four adaptable gel-foam heel zone cells that can be individually removed and repositioned to create zero pressure under the heel. By inflating the mattress and sealing off with the transport cap you can create a balanced-air self-adjusting semi-active mattress.

The **Alerta Sensafo Hybrid** incorporates cutting-edge **SensaCare Truflo Technology®**; with constant pressure sensing through an air sensor and microcomputer regulator to provide ultra-low interface pressure, and ultra-silent pump operation to promote an even ambience for natural sleep patterns and stable blood circulation.

TECHNICAL SPECIFICATION

Mattress Specification

- > Mattress Dimensions: 198 x 90 x 15 cm (78 x 35 x 6")
- > Mattress Weight: 15.5kg (34lb)
- > Cell Structure: Foam-filled air cells and SensaGel adaptive foot cells
- > CPR: Quick release
- > Max Load: 250kg (551lb)
- > Min Load: 30kg (66lb)
- > Evacuation: Built-in strap and handle system
- > Heel Zone: 4 adaptable individually removable gel-foam cells
- > Available in 120cm bariatric version

Pump Specification

- > Operating System: SensaCare Truflo Technology®
- > Pump Dimensions: 34.5 x 24 x 12.5 cm (13.5 x 9.4 x 4.9")
- > Pump Weight: 2.8kg (6.1lb)
- > Cycle Time: 10, 15, 20, 25 minutes
- > Power Input: AC220-240V, 50-60Hz
- > Power Consumption: 7W
- > Fitted with hanging brackets
- > Alternate/Static modes
- > Visual & audible alarm for low pressure, power failure & alternate failure
- > Max firm
- > Panel lock

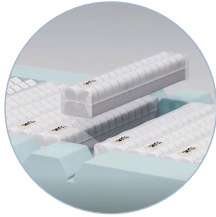
Cover Specification

- > Multi-stretch PU
- > Vapour permeable
- > Water resistant
- > Machine washable
- > Antimicrobial
- > 360 degree zipper
- > White underside of cover
- > BS7177: Crib 5
- > Mains cable management system

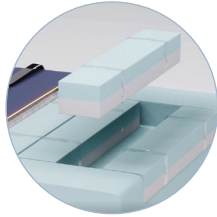
KEY FEATURES AND BENEFITS



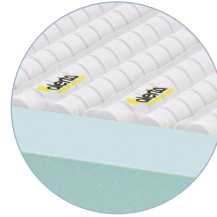
Castellated foam filled air cells



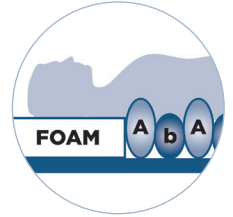
Independently removable cells



Removable heel cells



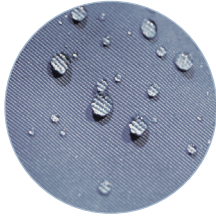
Branded cells



Pillow function



CPR release



Multi-stretch, waterproof & vapour permeable PU cover



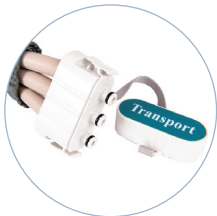
Antimicrobial, machine washable



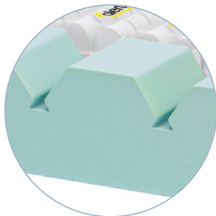
360 Degree zipper



Robust pump connection



Transport mode



Profiling side sections

CONTROL PANEL

Auto pressure sensing for consistent distribution of air

Visual and audible warning of air loss, power failure and alternate failure

Control panel lock to prevent unauthorised or accidental tampering (hold for 2 sec)

Multiple cycle time control for efficiency

Ultra-Silent™ pump operation to avoid disturbance

Static/alternating modes

Weight setting control knob

Alerta Proactive Patient Care www.alertamedical.com

SensaCare Thermal Technology

Visual indicators: Mute, Low Pressure, Power Failure, Alternate Failure, Max Firm, Cycle Time (10, 15, 20, 25 mins), Alternate, Static.

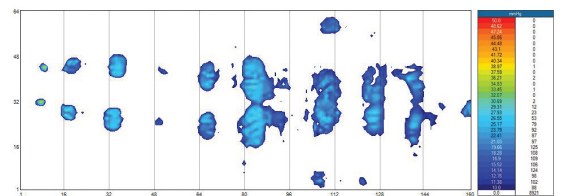
Product Codes

ALT-HYB2 - Sensaflo Hybrid mattress only

ALT-HYB2/05 - Sensaflo Hybrid mattress c/w SensaCare pump

ALT-HYB2/4 - 4ft wide Sensaflo Hybrid mattress only

ALT-HYB2/05/4 - 4ft wide Sensaflo Hybrid mattress c/w SensaCare pump



Clinical pressure mapping evaluation