

ALT-215/04 – Alerta Mobile – a battery powered alternating pressure relieving cushion system for effective prevention and treatment of patients at high risk of developing a pressure ulcer in hospital, nursing and care home environments.

Alerta Mobile control Unit is equipped with a long lasting Lithium Ion battery. In static mode, the battery gives a remote operation time of more than 24 hours. In Dynamic Mode, the system can last at least one day.

With simple to use settings and functionality, the **Alerta Mobile** enables the care provider to quickly set up the cushion system and have it operating at optimal pressure for a specific user with ease.

The **Alerta Mobile** is a highly versatile and cost effective solution which has been manufactured to comply with the most stringent quality and in-use guidelines.

Alerta Mobile also features an optional USB hand controller designed for self-determined living use providing the user with convenient independent system operation.

TECHNICAL SPECIFICATION

Cushion Specification

- > Cushion Dimensions: 45 x 50 x 10 cm (17.5 x 19.5 x 4")
- > Mattress Weight: 2.4kg (5.3lb)
- > Cell Structure: Cell-on-foam

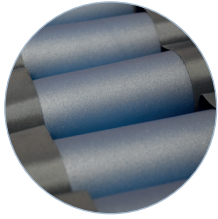
Pump Specification

- > Pump Dimensions: 19 x 10 x 6 cm (7.5 x 4 x 2.5")
- > Pump Weight: 1kg (2.2lb)
- > Max Load: 130kg (286.6lb)
- > Cycle Time: 5, 10 minutes
- > Power Input: AC220-240V, 50-60Hz
- > Air Output: 6-8 litres/minute
- > Pressure Range: 50-110 mmHg
- > Battery: Li-polymer 606696 3S1P 11.1V 4300mAh
- > Enclosed pump case fitted with hanging straps
- > Optional remote control

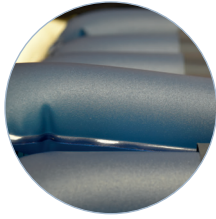
Cover Specification

- > Multi-stretch PU
- > Vapour permeable
- > Water resistant
- > Machine washable
- > Antimicrobial
- > Enclosed zipper
- > White underside of cover

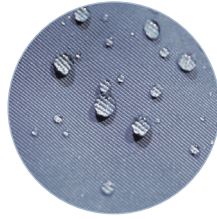
KEY FEATURES AND BENEFITS



TPU coated cells



Independently removable cells



Multi-stretch, waterproof & vapour permeable PU cover



Antimicrobial, machine washable



Enclosed zipper

CONTROL PANEL

www.alertamedical.com

Power

- Charging
- Low battery

Cycle Time

- 10 mins
- 5 mins

Static/Dynamic

- Static
- Dynamic

Comfort

- Firm
- Medium
- Soft

Low Pressure

- Leaking

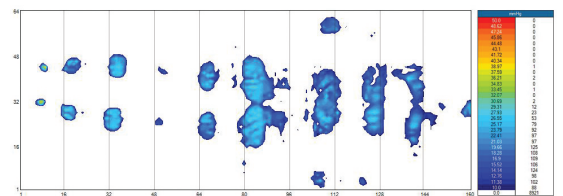
Visual charging and low battery

Multiple cycle time control for efficiency

Select static/alternate (dynamic)

Comfort setting

Visual and audible warning of low pressure



Clinical pressure mapping evaluation