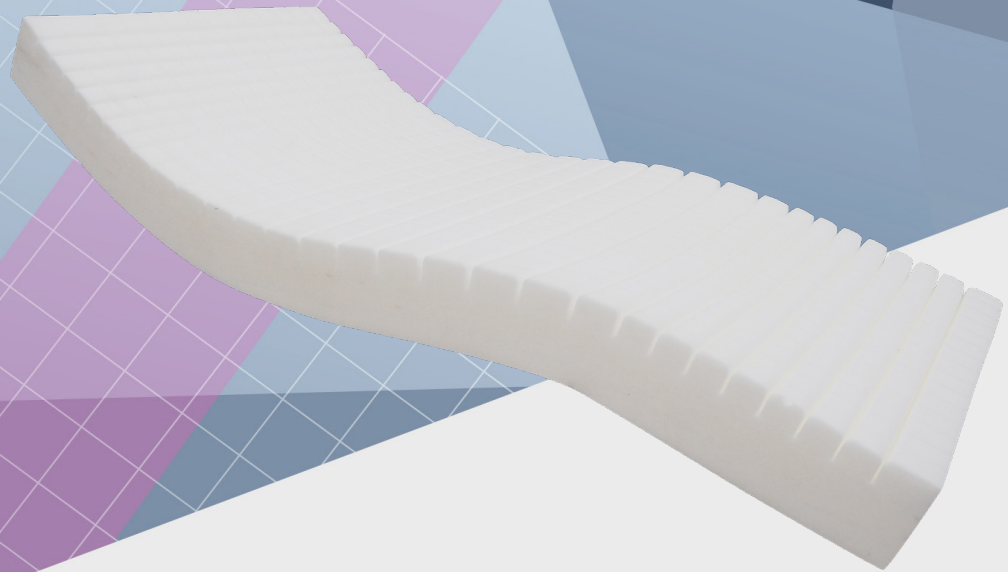
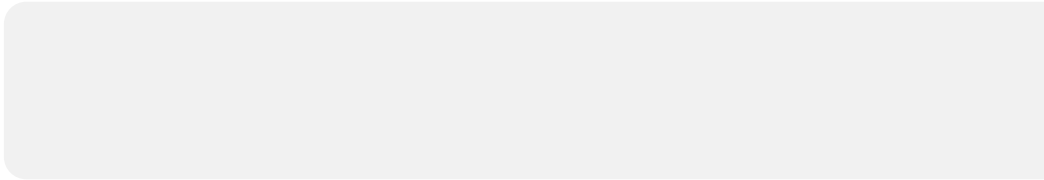




General User/Safety Guide  
**HARVEST STATIC  
MATTRESS  
RANGE**

STATIC MATTRESSES





# CONTENTS

<b>WARNINGS &amp; CAUTIONS</b>	<b>4</b>
<b>OVERVIEW</b>	<b>5</b>
<b>GENERAL INFORMATION</b>	<b>6-7</b>
<b>CLEANING &amp; CARE</b>	<b>8</b>
<b>GUARANTEES &amp; WARRANTIES</b>	<b>9</b>
<b>DECLARATION OF CONFORMITY</b>	<b>10</b>

# WARNINGS & CAUTIONS



**READ THIS INSTRUCTION MANUAL CAREFULLY. PLEASE NOTE IN PARTICULAR THAT THE SAFETY INSTRUCTIONS MUST BE OBSERVED.**



## WARNING

Please ensure that this booklet is read prior to first use.

Please refer to the information in this booklet as a guideline only.

Harvest Healthcare Ltd recommend that prior to using this product, a full risk assessment must be completed by a qualified professional, in order to determine that the correct product is suitable for each individual.

Do not allow sharp objects to penetrate the cover material.

Do not use this product for/whilst lifting the patient. This will damage the product and could put the patient at risk.

Ensure that this product is used the correct way up if not reversible.

Do not expose this product to open flames. We advise the user not smoke when using this product.

Facial contact with the cover may cause suffocation.

## SYMBOLS USED



WASH at  
80°C



TUMBLE DRY  
ON LOW



DO NOT  
DRY CLEAN



DO NOT  
BLEACH



DO NOT IRON



CE MARK



DO NOT USE  
PHENOLS



NO  
SMOKING



This symbol indicates general hazards. There is a danger to life and health.

# OVERVIEW

## MATTRESS RANGE OVERVIEW/PERFORMANCE CHARACTERISTICS

	WIDTH (MM)	LENGTH (MM)	THICKNESS (MM)	MAX PATIENT WEIGHT (KG)	RISK LEVEL
<b>COMMUNITY MATTRESS</b>	900/1200/ 1400	2000/ 1900	125	159	Medium
<b>COMMUNITY PLUS MATTRESS</b>	900/1200/ 1400	2000/ 1900	150	190	High
<b>FIRE-TECH 7 COMFORT</b>	900/1200/ 1400	2000/ 1900	150	190	High
<b>FIRE-TECH 7 VANDAL PROOF</b>	900/1200/ 1400	2000/ 1900	150	190	High
<b>PRIME COMFORT</b>	900/1200/ 1400	2000/ 1900	150	177	High
<b>PRIME COMFORT PLUS</b>	900/1200/ 1400	2000/ 1900	140	247	High
<b>REFLECT 2</b>	900/1200/ 1370	2000	165	247	High
<b>REFLECT 2 PLUS SIZED &gt; 45</b>	1200/ 1400	2000	180	285	High
<b>REFLECT 2 PLUS SIZED &gt; 60</b>	1200/ 1400	2000	180	381	High
<b>KINETIC AIR</b>	900	2000	150	247	High
<b>MODULAR REPLACEMENT</b>	900	2000	160	127	Medium
<b>MODULAR REPLACEMENT PLUS SIZED</b>	1200	2000	160	190	Medium

# GENERAL USE

## INSTRUCTIONS FOR USE

Check whether the mattress is a replacement or an overlay.

- If it is a replacement mattress it should be placed directly on to the bed frame
- If it is a mattress overlay it should be placed on top of the existing mattress.

Check that the safe working load of the mattress is suitable for the intended user.

**Do not exceed the max patient weight of the mattress (see page 5).**

Ensure that the Risk Factor is suitable for the intended user. To help prevent pressure damage it is important that patients reposition themselves, or are repositioned regularly.

Mattresses are delivered in plastic covers for protection; these covers must be removed before use.

With the exception of bed sheets avoid using any additional covers/padding between the patient and the support surface, as this may affect its pressure reducing qualities.

## INTENDED PURPOSE

Harvest Healthcare static mattresses are designed for patients at risk of pressure injury, or who have already developed pressure injuries. The foam surface redistributes pressure, aiming to reduce capillary closure in high risk areas such as the heels and sacrum. The mattress range overview (see page 3) supports identifying the most appropriate Harvest Healthcare static mattress for an individual patient, giving ranges for patient risk levels and maximum patient weights. These are provided as a guide to support appropriate mattress choice, but all individuals should be risk assessed by a trained professional as individual circumstances may alter mattress choices.

Never use a mattress with a lower risk category than that assigned to the service user by a trained professional.

Never exceed the maximum patient weight for a mattress.

Misuse of the mattress could lead to the development of pressure injury.

## PERFORMANCE CHARACTERISTICS/MATTRESS INSPECTION RECOMMENDATIONS

Mattresses should be checked regularly to ensure they remain 'fit for purpose', clinically effective and pose no risk of infection to either the patient or the carer.

Harvest Healthcare Ltd recommend that a thorough inspection of both the interior (foamcore) and exterior (cover) of the mattress is carried out weekly, or each time a new patient is placed on the mattress. Visual checks should be carried out daily to identify any significant signs of damage or infection risk.

If any signs of contamination are identified on the cover, the mattress should be withdrawn from use immediately and the cover replaced. If the foam and/or the cover are showing signs of contamination or excessive wear the mattress should be removed from use immediately and the entire mattress replaced. Signs of excessive wear may include, but are not restricted to, thinning, discolouration, tearing, fraying, misshaping and fluid ingress.



**Facial contact with any covering material such as that used on this product can cause suffocation and a Risk Assessment should be done prior to the use of this product.**

# GENERAL USE

## **MATTRESS CLEANING AND CARE**

Mattresses are fully encased in a protective waterproof, multi-stretch PU cover to prevent fluid ingress from damaging the foam core. The mattress cover should be cleaned regularly in accordance with your organisation's disinfection protocol.

**For full cleaning procedures for our mattresses see page 8.**

## **MOVING, HANDLING AND STORAGE**

Where possible, mattresses should be stacked flat and transported on a bed base. Mattresses should be handled by two people, one at either end of the mattress. Store mattresses in a temperate, dry environment. Do not expose to high humidity or heat.

**Do not drag or pull mattresses by the cover.**

## **SAFE USE**

The length, width and height of the mattress should be checked to ensure that these dimensions are within the limits specified by the bed manufacturer and do not introduce gaps that could increase the risk of entrapment.

Before and during use of mattress overlays with bed rails, consider the reduction in the effective height of the bed rail relative to the top of the mattress may allow the occupant to roll over the top of it; extra height bed rails may be required. The hazard of entrapment in the vertical gap between the side of the mattress and the bed rail may be exacerbated due to the soft, easily compressible nature of the overlay and/or mattress edge. If the standard mattress is replaced with a lightweight foam mattress, third party bed rail assemblies (including the mattress and bed occupant) can tip off the bed when the bed occupant rolls against the bed rail. This is because many third-party bed rails rely on the weight of a standard mattress to hold the assembly in place.

If the mattress is on a bed which is profiled it may not be a suitable surface for CPR. In this case, put the service user on the floor to perform CPR.

## **WARRANTY**

### **Foam Inner**

All Harvest Healthcare static foam mattresses are covered by warranty for a period of 3 years. Damage through incorrect use will invalidate this warranty.

### **Mattress Cover**

All Harvest Healthcare mattress covers are covered by warranty for a period of 12 months. Damage through incorrect use and penetration by sharp instruments will invalidate this warranty.

## **GUARANTEE**

Harvest Healthcare Ltd guarantees to repair or replace all goods issued to its customers which are found to be defective whilst still under their applicable warranty period. All warranties are subject to our standard terms and conditions of sale which can be found on our website or by request to Harvest Healthcare Ltd.

# CLEANING & CARE



## WARNING

Eye protection, gloves and protective clothing should be worn when carrying out cleaning and disinfection procedures.

When disinfecting the system, Harvest Healthcare recommends the following guidelines which have been developed to comply with recognised infection control procedures. These procedures are also to be used to prevent cross infection when transferring the system between patients.

## MATTRESS COVER

During general use the mattress can be cleaned by wiping with a mild detergent solution.

Where necessary the mattress cover can be removed for laundering or sterilisation. Where there is staining or body fluids on the mattress, wash thoroughly with soap and water, then wipe with a sodium hypochlorite solution diluted to 1000ppm before laundering.

Mattress covers may be laundered as follows:

- 1 Pre wash cold 10 minutes
- 2 Main wash 80°C 10 minutes
- 3 Followed by cold rinses and extraction.



Do not use abrasive cleaners, phenol disinfectants, solvents or alcohol-based cleansers, e.g. Dettol, Phenicol, Hibiscrub, Clearsol, Stericol, Hycoline, as these will damage the cover materials.



Do not iron.



Ensure that the mattress is thoroughly dried before remaking the bed or placing in storage.



**HYPERCARBONATE AND PHENOL-BASED SOLUTIONS SHOULD NOT BE USED AS THESE WILL DAMAGE THE MATTRESS COVER**

## DISPOSAL

If contaminated, please dispose of as clinical waste.

If not contaminated dispose of as household waste at your local approved facility.

### Note:

Please report any serious incident related to this device to Harvest Healthcare. Full contact details can be found at the end of this document.



# TECHNICAL SPECIFICATION

## MATTRESS RANGE TECHNICAL SPECIFICATION

	<b>FIRE TESTING (FOAM)</b>	<b>COVER MATERIAL</b>	<b>FOAM TYPE</b>	<b>PRODUCT WEIGHT (KG)</b>
<b>COMMUNITY MATTRESS</b>	BS 7177 Crib 5	PU	High Density	8 kg
<b>COMMUNITY PLUS MATTRESS</b>	BS 7177 Crib 5	PU	High Density	11 kg
<b>FIRE-TECH 7 COMFORT</b>	BS 7177 Crib 7	PU - Welded/Zipped	High Density	13 kg
<b>FIRE-TECH 7 VANDAL PROOF</b>	BS 7177 Crib 7	PU - Welded/Zipped	High Density	13 kg
<b>PRIME COMFORT</b>	BS 7177 Crib 5	PU - Welded	High Density- Castellated	12 kg
<b>PRIME COMFORT PLUS</b>	BS 7177 Crib 5	PU - Welded	Multizone Castellated	15 kg
<b>REFLECT 2</b>	BS 7177 Crib 5	PU - Welded	Multizone Visco	12 kg
<b>REFLECT 2 PLUS SIZED &gt; 45</b>	BS 7177 Crib 5	PU - Welded	Multizone Visco	18 kg
<b>REFLECT 2 PLUS SIZED &gt; 60</b>	BS 7177 Crib 5	PU - Welded	Multizone Visco	18 kg
<b>KINETIC AIR</b>	BS 7177 Crib 5	PU - Welded	Multizone Castellated	16 kg
<b>MODULAR REPLACEMENT</b>	BS 7177 Crib 5	PU	Castellated	12 kg
<b>MODULAR REPLACEMENT PLUS SIZED</b>	BS 7177 Crib 5	PU	Castellated	22 kg

# DECLARATION OF CONFORMITY

## DECLARATION OF CONFORMITY

Declaration of Conformity Annex VII EU Directive 93/42/EEC

We, as company: Harvest Healthcare Ltd  
Sheaf House  
Bradmarsh Way  
Bradmarsh Business Park  
Rotherham, S60 1BW

Authorised Representative: TBC  
SRN: TBC

Confirm on our own behalf that the medical product:

**Please see the Static Mattresses list on the next page.**

**Risk Class: I**

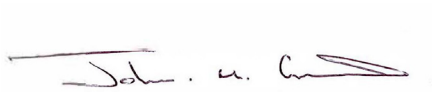
**SRN:** TBC

complies with all applicable requirements in Appendix I of the EU directive 93/42/EEC  
The following compliance evaluation process was applied: Annex VII  
EU legislation for this type of product covers all safety, health and environmental requirements.

Modifying this product without consultation with Harvest Healthcare Ltd will invalidate this declaration of conformity.

This declaration of conformity is issued under the sole responsibility of Harvest Healthcare.

Notified Body: TBC



Product Development and Quality Manager  
Rotherham, 07.04.2020

This document is valid for 4 years after the date of the signature.

# NOTES

## DECLARATION OF CONFORMITY

Declaration of Conformity Annex VII EU Directive 93/42/EEC

**Here is the list of the Static Mattresses.**

Community-900mm wide	HSMCOM	UDI: 5060517530181
Community-1200mm wide	HSMCOM.12	UDI: 5060517532109
Community Plus-900mm wide	HSMCOMP	UDI: 5060517530198
Community Plus-1200mm wide	HSMCOMP.12	UDI: 5060517532185
Community Plus-1400mm wide	HSMCOMP.CAS2.14	UDI: 5060517532383
Fire-Tech 7 Comfort-Zipped	HSMFIRET.CFT	UDI: 5060517532390
Fire-Tech 7 Comfort- Welded	HSMFIRET.CFT.W	UDI: 5060517530235
Fire-Tech 7 Vandal Proof	HSMFIRET.VP	UDI: 5060517532338
Prime Comfort-900mm wide	HSMPRIM	UDI: 5060517530204
Prime Comfort-1200mm wide	HSMPRIM.DV12	UDI: 5060517531935
Prime Comfort-1400mm wide	HSMPRIM.14	UDI: 5060517532222
Prime Comfort Plus-900mm wide	HSMPRIMP	UDI: 5060517530211
Prime Comfort Plus-1200mm wide	HSMPRIMP.12	UDI: 5060517532123
Reflect 2-900mm wide	HFR147	UDI: 5060517530228
Reflect 2-1200mm wide	HFR147.12	UDI: 5060517532161
Reflect 2-1370mm wide	HFR147.1370	UDI: 5060517532277
Reflect 2 Plus Sized >45-1200mm wide	HFR227	UDI:5060517532376
Reflect 2 Plus Sized >45-1400mm wide	HFR227.14	UDI: 5060517532130
Reflect 2 Plus Sized >60-1200mm wide	HFR227.60	UDI: 5060517533229
Reflect 2 Plus Sized >60-1400mm wide	HFR.1400.60	UDI: 5060517531928
Kinetic Air Hybrid Mattress	HK100	UDI: 5060517530143
Modular Replacement	HFR114	UDI: 5060517531584
Modular Replacement Plus Sized	HFR105.120	UDI: 5060517532079

# ALSO AVAILABLE...

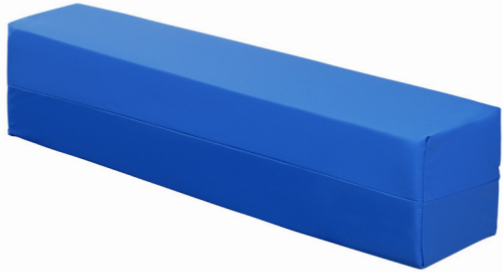
## STATIC MATTRESS LENGTH EXTENSIONS

The Static Mattress Length Extensions have been designed for use with our Static Mattress range.

Ideal for use with existing mattresses, the piece will add a further 150mm or 200mm\* and close any gaps between the mattress and bed frame.

Once in place, the kit continues to provide pressure relief around the heels and zonal areas.

\*Used in conjunction with the bed extensions.



### PRODUCT CODE

### SIZE

HFIM1515	900mm x 150mm x 150mm
HFIM2013	900mm x 200mm x 130mm
HFIM2016	900mm x 200mm x 160mm
HFIM2020	900mm x 200mm x 200mm
HFIM2016.12	1200mm x 200mm x 160mm
HFIM2016.14	1400mm x 200mm x 160mm

**Serial No:**

**DOCUMENT REFERENCE:** STATICMAT/MANUAL04- April 2020



harvesthealthcare®

**Harvest Healthcare Limited.** Company No: 07210261  
Sheaf House, Bradmarsh Way, Bradmarsh Business Park,  
Rotherham, S60 1BW

**T** +44 (0)1709 377 172 **F** +44 (0)1709 377 173

**E** sales@harvesthealthcare.co.uk [www.harvesthealthcare.co.uk](http://www.harvesthealthcare.co.uk)

© Copyright Harvest Healthcare

Our Full Terms & Conditions are available by request or can be found on our Website.  
Harvest Healthcare reserves the right to alter or amend this document without notice.