



harvesthealthcare®  
equipped to care

# Evacuation Products



[www.harvesthealthcare.co.uk](http://www.harvesthealthcare.co.uk)

POWER TO  
DELIVER

# HARVEST HEALTHCARE YOUR FIRST CHOICE...



## TOTAL SUPPORT TEAM

We offer a full package to support you from installation to service and repair..



## HARVEST FAST TRACK NATIONWIDE DELIVERY

We use our own transport for many deliveries which gives us the flexibility to meet your needs.



## SUPERIOR BUILD QUALITY

Our products are built to provide years of service. Using the latest materials and fabrication techniques.



## KNOWLEDGEABLE SALES TEAM

Our experienced sales team is always available to help you find the best possible solution.



## INNOVATIVE WELL DESIGNED PRODUCTS

Our products are designed to meet the ever changing needs of our customers. We continually provide new solutions.



## EXCEPTIONAL VALUE FOR MONEY

Through careful design and production processes you can be assured that our products will provide value for money over their working life.



## EXTENSIVE PRODUCT RANGES

To give you the best solution we maintain an extensive range of products for complete flexibility.

# CONTENTS

EVACUATION PRODUCTS

3

EVACUATION  
PRODUCTS

Evacuation Sheets

04

Evacuation Mattresses

05

Stairway Evacuation

07



# EVACUATION SHEET

## HTE001 - EVACUATION SHEET

The Fire Evacuation Sheet is designed to be used in conjunction with standard foam mattresses. During evacuation the straps are secured around the mattress and patient who is then evacuated to safety. This sheet features a silicone coated side to aid swift and easy movement of the device across all surface types.

The red polyester fabric is Fire Retardant and extremely strong and has been vigorously tested.



# EVACUATION MATTRESSES

EVACUATION PRODUCTS

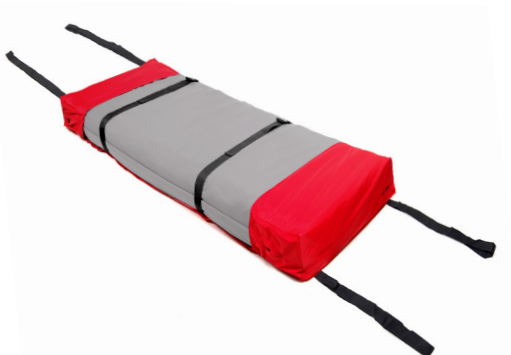
5

EVACUATION PRODUCTS

## HTE001/2 - EVACUATION SHEET FOR ACTIVE MATTRESSES

This Evacuation Sheet is designed to take an active air mattress. In the event of an evacuation the service user is secured to the mattress using the straps on the evacuation sheet and moved to safety along with the mattress. Suitable for both Replacement and Overlay mattresses.

The red polyester fabric is Fire Retardant and extremely strong and has been vigorously tested.



## HTE002 - WALL MOUNTED EVACUATION MATTRESS WITH STORAGE BAG

This popular product includes a storage bag and is designed to be mounted on a wall until needed. The Wall Mounted Evacuation Mattress includes a 50mm foam base to support the patient during evacuation. During evacuation the patient is placed on the mattress, secured using the straps provided and evacuated to safety.

The red polyester fabric is Fire Retardant and extremely strong and has been vigorously tested.

**t** +44 (0)1709 377172 **f** +44 (0)1709 377173  
**e** sales@harvesthealthcare.co.uk  
**www.harvesthealthcare.co.uk**

# EVACUATION SLEDGE

## HTE008 - EVACUATION SLEDGE FOR ACTIVE MATTRESSES

This sledge fits underneath the existing active mattress and is designed to suit most mattresses.

It contains a high density foam base so that in the event of an evacuation, the air mattress can be deflated by opening the CPR valves and disconnecting from the pump.

The patient is then securely strapped in and evacuated to safety.

The mattress base has a section of low friction material to make it easier to pull on most surfaces.

Easily accessible emergency straps are hidden in pockets to keep them from fouling profiling bed mechanisms.



# STAIRWAY EVACUATION

EVACUATION PRODUCTS

# 7

EVACUATION PRODUCTS

## EMERGENCY STAIRWAY EVACUATION DEVICES

Regulations require that your emergency plan should be appropriate for your premises, and arrangements should be in place for the safe evacuation of people identified as being especially at risk. With these unique chairs, evacuations can be carried out by only one person, giving you a better chance of getting your patients out in time. These chairs can fold down for easy storage and include wall mounting brackets.

### HTE202 - EXITMASTER EGO

The Exitmaster Ego is easy to use and is ultra-slim for storage. It has two wheels with auto brakes when folded. It provides a comfortable and supportive seat position and includes a wall mounting bracket. The safe working load is 150kg / 24 Stone.



### HTE200 - EXITMASTER VERSA

The Exitmaster Versa has a 4 wheel design meaning it travels well on landings, corridors and stairs. The seat offers excellent support and comfort and aids easy transfer with an advanced belt guide system. There is also a footrest for comfort. It has safety brakes on the rear wheels and includes a wall mounting bracket. The safe working load is 150kg / 24 Stone.

# STAIRWAY EVACUATION

## HTE201 - EXITMASTER ELITE

The Exitmaster Elite has a 4 wheeled design meaning that it travels well on landings, corridors and stairs. This Exitmaster provides extra comfort with a padded seat and arm rests and an advanced head rest with head band. It also has a footrest. There is an intrgral 4 point harness and a wall mounting bracket. This stairway evacuation device can double as a transit chair. The safe working load is 150kg / 24 Stone.









A series of horizontal lines for writing notes, spaced evenly down the page.







Sheaf House, Bradmarsh Business Park,  
Bradmarsh Way, Rotherham S60 1BW

**T** +44 (0)1709 377172

**F** +44 (0)1709 377173

**E** [sales@harvesthealthcare.co.uk](mailto:sales@harvesthealthcare.co.uk)

**[www.harvesthealthcare.co.uk](http://www.harvesthealthcare.co.uk)**

© Copyright Harvest Healthcare

**Harvest Healthcare Limited**. Company No: 07210261

Our Full Terms & Conditions are available by request or can be found on our Website.

Harvest Healthcare reserves the right to alter or amend this document without notice.